

**722 Market Street E
Gaithersburg, Md. 20878
\$560,000**



For showings
please call...

Ann Joliet
301-774-1415

Re/Max Realty Centre
3300 Olney Sandy Spring Road
Olney, Maryland 20832

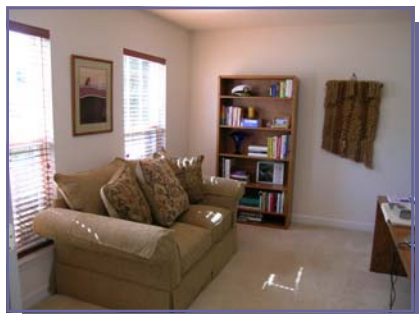


Spectacular BLUE RIBBON home in Lakelands !

Neutral décor, light flooded interior, shows like brand new model home! 9' ceilings on main level, 12' ceiling in LR, gas fireplace, double atrium doors to 10'x 18' deck. Designer kitchen features, hardwood floors, breakfast bar, table space, glass front china cabinets, gas range.

Spacious MBR with luxury bath, soaking tub and separate shower. Four steps up to next level for two additional BRS and 2nd bath. Lower level entry offers ceramic tiled foyer, a den/office (possible 4th bedroom) , laundry room and entrance to double car garage. All within walking distance to Kentlands Village shopping district!

See complete visual tour, floor plans, community information and property disclosures online at www.homes-2006.com



See more details, school info and Virtual Tour at....

www.AnnJoliet.com

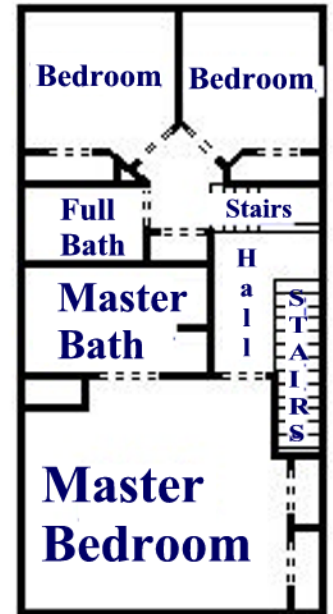
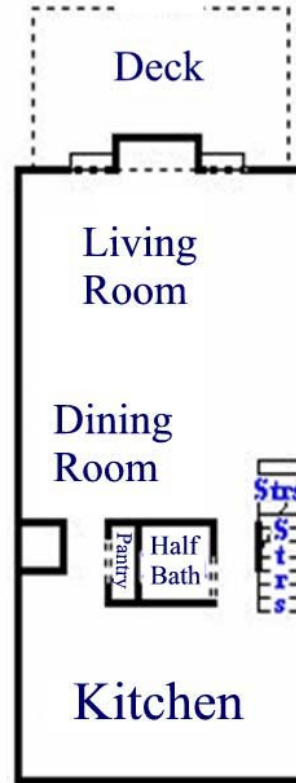
Additional Features



Walk to popular Kentlands Village Square and Village Shops!

- **Sales Price:** \$560,000
- **Year Built:** 2000
- **Builder:** Classic Homes Turnbury II Model
- **Current Taxes:** \$4,057 annually
- **HOA Fee:** \$72.50 per month
- **Utilities:** Gas Furnace, Gas HWH, Electric AC
- **Appliances:** GE Spectra Gas Range with self cleaning oven. GE "Nautilus" Power Wash Dishwasher with Quiet Power Sound Package. Maytag Plus double door refrigerator with water & ice dispenser. GE Space Maker Microwave. Washer & Dryer - Whirlpool "Ultimate Care II" commercial quality, super capacity plus.

Floor Plans are an approximate rendering of the property layout. They are provided strictly for the purchasers convenience, and neither seller or listing agent/broker shall be liable for any inaccuracies.



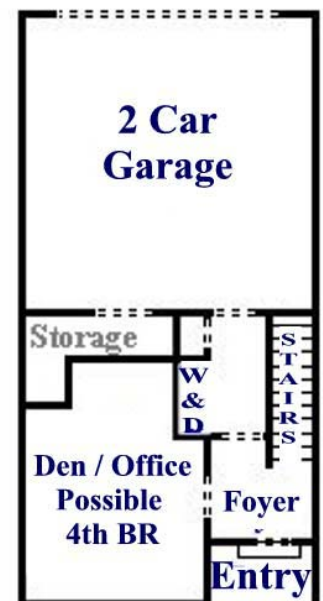
Lakelands Community Center



Lakelands Tennis Courts



Lakelands Pool



Additional photos, property disclosures, plat, survey, maps, school & community info, photos of Kentlands Village Square & Shops are available online at:

www.homes-2006.com

All information contained in this brochure is believed to be reliable, however it is NOT GUARANTEED. Buyer assumes responsibility to verify ALL information by checking with home inspector, or reviewing other related plans or disclosures. Please check with your selling agent regarding property tax increases and other contract addendums available at the above web address. For additional information please call Ann Joliet at 301-774-1415. Listed by Re/Max Realty Centre

